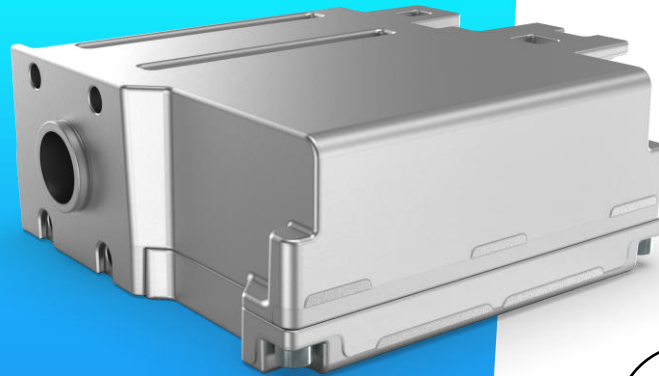


– PRELIMINARY – (March 2025)

Electromechanical Actuator 46 [EMA 46]



Proportional valves

Directional valves

Smart products

Special designs

Product classification

Name	Max volume flow @ 6 bar dp
EHA 2.0	1,25 l/min based on NG-PPCD03 Fail-Safe
	2,5 – 5 l/min based on NG-PPCD04 IPH
	2,5 – 5 l/min based on NG-PPCD04
	10 l/min based on NG-PPCD05
EMA	

Benefits and Application

- ≡ No pilot pressure necessary
- ≡ Overshoot free
- ≡ Oscillation free
- ≡ Sophisticated thermal and voltage management
- ≡ Easy configuration by **TSC**



Performance Data

Temperature range for normal operation	- 40 °C to + 100 °C (ambient temp. with circulating air. EMA mounted to a sectional valve)
Temperature range for reduced operation	+ 100 °C to + 120 °C (ambient temp. with circulating air. EMA mounted to a sectional valve)
Working stroke	22 mm
Speed	up to 90 mm/s
Forces	Actuation: 360 N @ all speeds Holding: 370 N Start up: 410 N
Repeatability	± 16 µm
Resolution	6 µm

Electrical Data

Voltage	12 V	24 V
Operating voltage	U _{min} = 9 V U _{max} = 16,5 V	U _{min} = 16 V U _{max} = 32 V
Idle current (without holding current)	80 mA	60 mA
Holding current		
Extend / Retract	~ 830 mA	500 mA
Neutral	~ 540 mA	300 mA

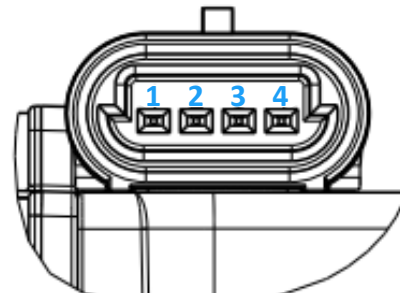
Additional data

Weight	1027 g (without gear rack)
Protection class	IP6K6 / IPX9K

Plug and Pin assignment

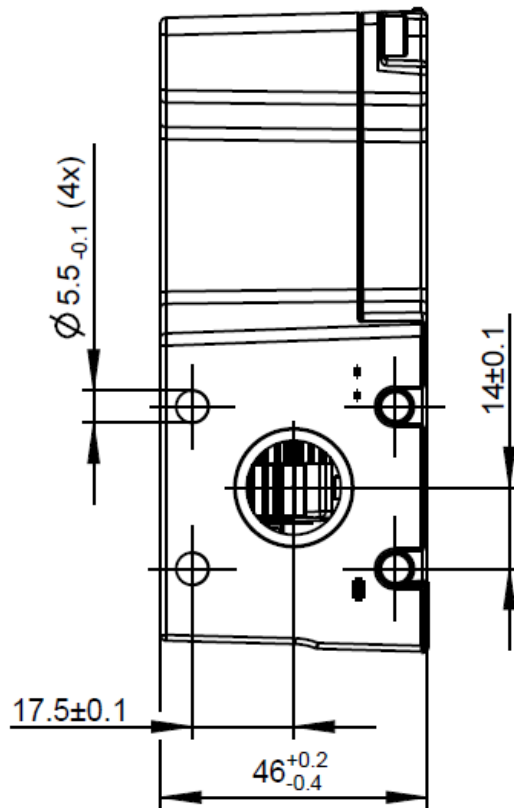
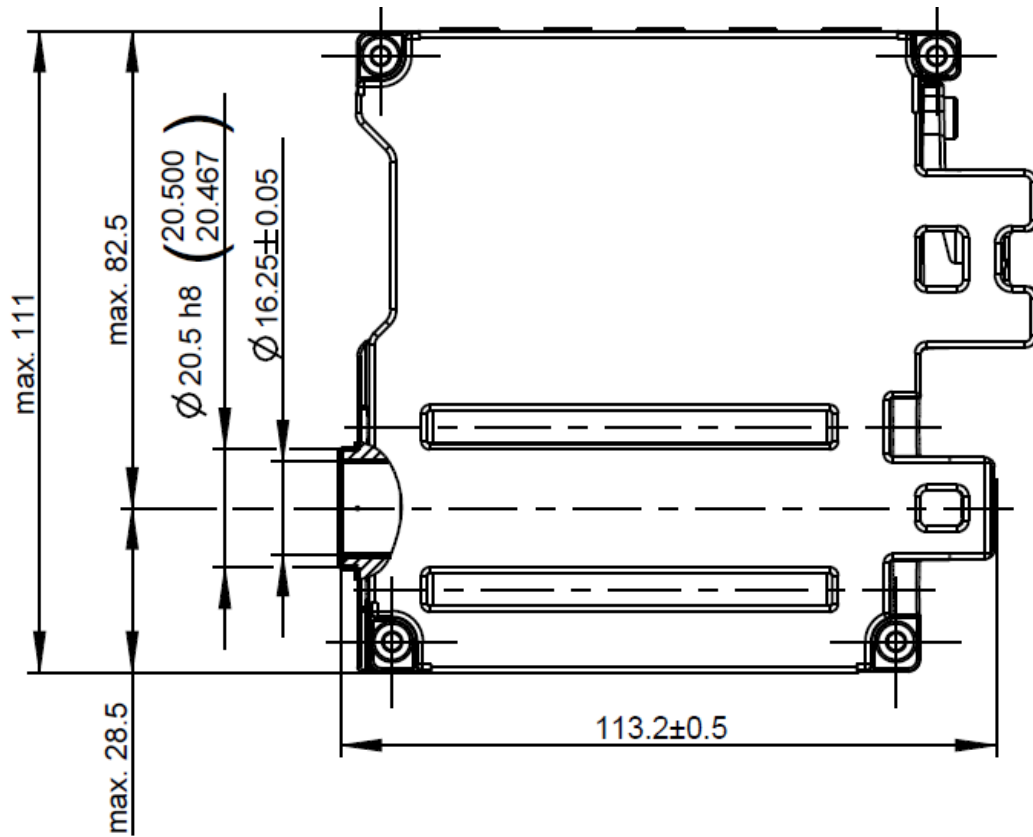
Pin number	Function
1	CAN High
2	CAN Low
3	GND ground
4	Supply voltage

Delphi Metri Pack 150





Dimensions [mm]





DISCLAIMER





The presented information is based on current knowledge and provides only non-binding information to the customer. Any liability in connection with this information is excluded. It is the responsibility of the customer to determine the suitability and appropriateness of the product for his intended purpose. We reserve the right to change the product with regard to technical progress and new developments.

CONTACT DETAILS




Thomas Magnete GmbH

 Innomotion Park 3
57562 Herdorf, Germany

 Tel. +49 2744 929-0

 sales@thomas-magnete.com

 TECsupport@thomas-magnete.com

 thomas-group.com