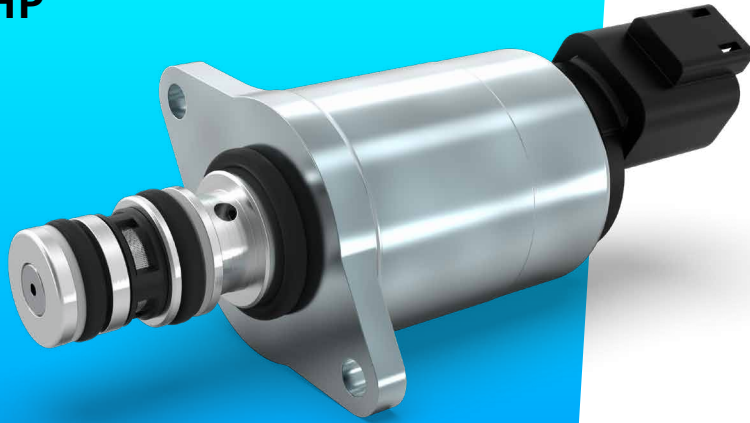


## Proportional Pressure Control Valve PPCD04 – PPRV HTHP



Proportional  
valves

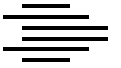
Directional  
valves

Smart  
products

Special  
designs

### Product classification

Name	Max volume flow @ 6 bar dp	
PPCD 03	1,25 l/min	Direct controlled
<b>PPCD 04</b>	<b>2,5–5 l/min</b>	
PPCD 05	10 l/min	
PPCD 06	15 l/min	
PPCD 08	20 l/min	
PPCD 09	30 l/min	Pilot operated
PPCP 09	35 l/min	
PPCP 13	72 l/min	



## Hydraulic Data

Max pressure pump	$P_p = 350 \text{ bar}$
Max pressure tank	$P_T = 210 \text{ bar (statically)}$
Max pressure work	$P_A = 20, 25 \text{ or } 32 \text{ bar}$
Hysteresis	< 4 % of the nominal pressure at 100 Hz PWM signal
Contamination level	Min Filtration: 20/18/15 According to ISO 4406
Fluid	Mineral Oil According to DIN 51524
Temperature range fluid	-30°C to +105°C
Leakage (internal)*	< 0,4 l/min (de-energized) < 0,8 l/min (energized)
Filterscreen size	125 $\mu\text{m}$ (P-Port)

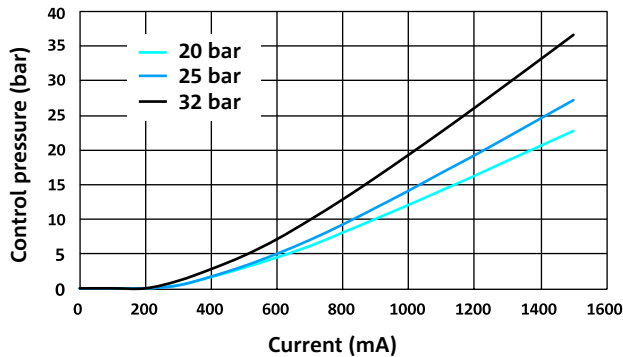
## Electrical Data

Voltage	12 V	24 V
Max current	1500 mA	750 mA
Resistance	5,3 $\Omega \pm 5\%$	21,2 $\Omega \pm 5\%$
Type of control	Current control PWM 100 Hz recommended	
Connector	AMP Junior timer Deutsch Connector DT04-2P	
Protection class	up to IP6K6 / IPX9K	
Switching time	$t_{on} < 50 \text{ ms}$ ( $p_A = 0\%$ to 90%) $t_{off} < 50 \text{ ms}$ ( $p_A = 100\%$ to 10%)	

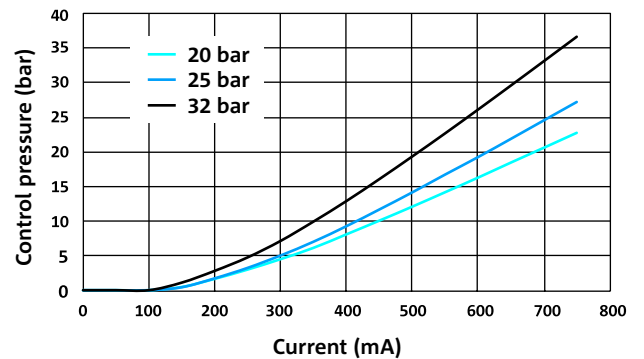
\* The reported data are measured @  $P_p=35 \text{ bar}$  (20 and 25 bar version) and 40 bar (32 bar version) an oil viscosity of 32 cSt

## Current vs. Pressure (average characteristic)

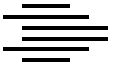
P-I CURVE (12 V)



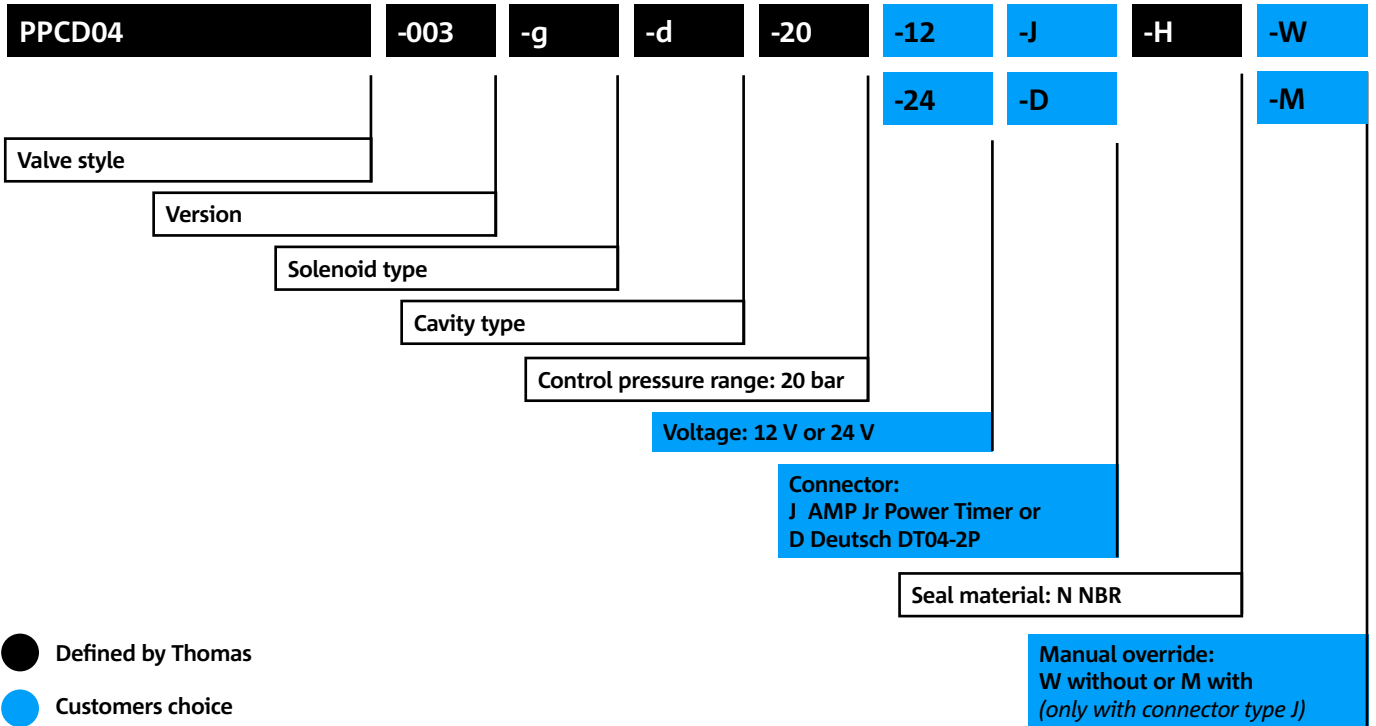
P-I CURVE (24 V)







## Model code



**CONTACT DETAILS** 

**Michael Lutz**

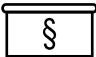
Thomas Magnete GmbH

 Innomotion Park 3  
57562 Herdorf, Germany

 Tel. +49 2744 929-220

 michael.lutz@thomas-magnete.com  
www.thomas-group.com



**DISCLAIMER** 

The presented information is based on current knowledge and provides only non-binding information to the customer. Any liability in connection with this information is excluded. It is the responsibility of the customer to determine the suitability and appropriateness of the product for his intended purpose. We reserve the right to change the product with regard to technical progress and new developments.